

Product overview

 EURO	 ATHLET	 SNOW
EURO - FRONT	ATHLET - FRONT	SNOW - FRONT
EURO - FRONT	ATHLET - FRONT	M 440
M 350	M 332	
M 249	M 226	
M 349	M 235	
M 434		
M 234		
M 480		
M 248		
EURO - DRIVE	ATHLET - DRIVE	SNOW - DRIVE
EURO - DRIVE	ATHLET - FRONT	M 431
M 470	M 232 S	
M 255		
EURO - TRAILER	ATHLET - TRAILER	
EURO - TRAILER	M 277	
M 223		
M 422		
M 222		
M 423		

Geschäftsbereich Semperit
Büttnerstraße 25
30165 Hannover
Postfach 169
30001 Hannover
Germany
www.semperit-truck-tires.com

68D77.us 2010.02

Delivery Range

Commercial vehicle tires

EURO
ATHLET
SNOW



Overview of tread patterns



EURO

EURO-FRONT



M 350/M 249

EURO-FRONT



M 248

EURO-DRIVE

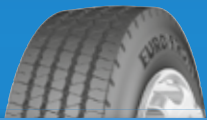


M 470

EURO-TRAILER



M 223



EURO-FRONT



EURO-DRIVE



EURO-TRAILER



M 349



M 255



M 422



M 434



M 222



M 234



M 423



M 480



ATHLET

ATHLET-FRONT



ATHLET-FRONT

ATHLET-DRIVE



ATHLET-DRIVE

ATHLET-TRAILER



M 277

SNOW-FRONT



M 440

SNOW-DRIVE



M 431



ATHLET-FRONT



M 232 S



M 332



M 226



M 235



SNOW



EURO

EURO-FRONT
EURO-DRIVE
EURO-TRAILER

As flexible as a customer needs to be



Our customers are always on the move, responding to the varying challenges of the transport business. Whether it is the stop-and-go of commercial traffic, or heavily-laden on long hauls. The efficiency of a fleet is also dependent on the performance of the tires.

We are well aware of the varying demands you make on your tires. This is because no other region in Europe takes so much out of the tires as do the Alps – the origin of our tire production. Tight curves, steep roads, crumbling asphalt and changeable weather represent great challenges to the driver, the vehicle and the tires.

The **EURO** series was developed to fulfill the flexibility required by daily business. To not only ensure that your goods arrive safely at their destination, but are also being transported economically.



EURO-FRONT



EURO-FRONT

- Front axle tires for regional and long distance, as well as all-round fitment for buses
- High mileage performance due to even wear pattern
- Precise handling and safe grip in the wet



Front axle



M 249

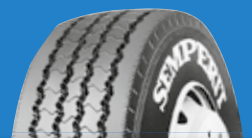
245/70 R 19.5 136/134 M
265/70 R 19.5 140/138 M
285/70 R 19.5 144/142 M

EURO-FRONT

295/60 R 22.5 150/147 K
315/60 R 22.5 152/148 K

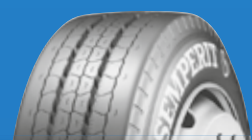
M 350

385/65 R 22.5¹⁾ 158/- L (160/- K)
315/70 R 22.5¹⁾ 152/148 M (154/150 L)
295/80 R 22.5 152/148 M
315/80 R 22.5 154/150 M (156/150 L)



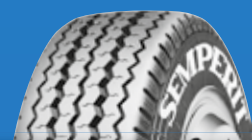
M 349

275/70 R 22.5 148/145 L



M 434

11 R 22.5 148/145 L
12 R 22.5 152/148 L (150/148 M)
13 R 22.5 154/150 L (156/150 K)



M 234

10 R 22.5 140/138 L



M 480

11 R 20 150/146 K

1) = Alternative tread pattern



EURO-FRONT



M 434

- Front axle tire for light trucks and small buses for local and long distance
- High service life and mileage due to a flat tread contour
- Good grip in the wet



Front axle



M 434

205/75 R 17.5 124/122 M
215/75 R 17.5 126/124 M
225/75 R 17.5 129/127 M
235/75 R 17.5 132/130 L (130/128 M)



M 248

7.00 R 16 117/116 L
7.50 R 16 121/120 L
8 R 17.5 C 117/116 L
8.5 R 17.5 121/120 L
10 R 17.5 134/132 L



EURO-DRIVE



EURO-DRIVE

- Drive-axle tire for light trucks and trucks in regional and long distance services
- High mileage thanks to wider tread
- Optimum traction also in the wet due to massive tread blocks



Drive axle



M 470

205/75 R 17.5	124/122 M
215/75 R 17.5	126/124 M
225/75 R 17.5	129/127 M
235/75 R 17.5	132/130 L (130/128 M)
275/70 R 22.5	148/145 L
315/70 R 22.5	152/148 M (154/150 L)
295/80 R 22.5	152/148 M
315/80 R 22.5	154/150 M
11 R 22.5	148/145 L
12 R 22.5	152/148 L

EURO-DRIVE

295/60 R 22.5	150/147 K
315/60 R 22.5	152/148 K



M 255

245/70 R 19.5	136/134 M
265/70 R 19.5	140/138 M
285/70 R 19.5	144/142 M



EURO-TRAILER

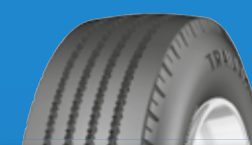


EURO-TRAILER

- Tire constructed for midi-trailer-concept in regional and long distance haulage, with extra load capacity in comparison to the standard concept
- Outstanding mileage performance due to wider tread and uniform wear from optimized ground pressure distribution
- Good tracking thanks to specially constructed shoulder grooves



Trailer



M 223

265/70 R 19.5	143/141 J
385/65 R 22.5	160/- K



EURO-TRAILER

385/55 R 22.5	160/- K (185/-L)
---------------	------------------



M 422

7.50 R 15	135/133 G (134/132 J)
11 R 22.5	148/145 J



M 222

8.25 R 15	142/141 G (141/140 J)
365/80 R 20	160/157 J



M 423

215/75 R 17.5	135/133 J
235/75 R 17.5	143/141 J
245/70 R 17.5	143/141 J



ATHLET

ATHLET-FRONT
ATHLET-DRIVE
ATHLET-TRAILER

As tough as a customer needs to be



Our customers are always on the move, even in places where there is no road. Construction site traffic means: moving heavy loads under the hardest conditions on all kinds of roads and terrain.

Originally built for the construction of a road network through the Alps, the **ATHLET** series copes with all the challenges of tough working conditions. Difficult terrain demands really rugged tires as insurance against nasty surprises.

Our **ATHLET** tires get through everywhere. Strong casings and special tire compounds ensure high service life. Capable of being used both on trackless terrain, as well as for combined on and off-road usage. This means that the **ATHLET** series is a good tire solution, contributing to profitable construction-site business, even under the most uncompromising conditions.





ATHLET-FRONT



ATHLET-FRONT

- Front-axle tire for all types of on and off construction site use
- Good resistance to damage and high mileage because of new, cut-resistant rubber compound
- Good retreadability due to robust casing



Front axle



ATHLET-FRONT

315/80 R 22.5 156/150 K



Alternative tread pattern

ATHLET-FRONT

12 R 22.5 152/148 K
13 R 22.5 154/150 K



M 332

295/80 R 22.5 152/148 K



M 226

14.00 R 20 160/157 G



M 235

14.00 R 20 TT 164/160 G
14.00 R 20 TL 164/160 G



ATHLET-DRIVE



ATHLET-DRIVE

- Drive-axle tire for combined off-road and construction-site use
- Good resistance to damage and high mileage due to new, cut-resistant rubber compound
- High load capacity, even with heavier loads due to improved tire contour
- Pattern design for enhanced traction
- Good retreadability due to robust casing



Drive axle



ATHLET-DRIVE

315/80 R 22.5 156/150 K
12 R 22.5 152/148 K
13 R 22.5 154/150 K



M 232 S

10 R 22.5 140/138 K
13 R 22.5 154/150 L



M 277

- Tipper and articulated trailer tire for combined off-road and construction site use
- Robust casing, resistant to damage
- Good self-cleaning characteristics



M 277

385/65 R 22.5 160/-K

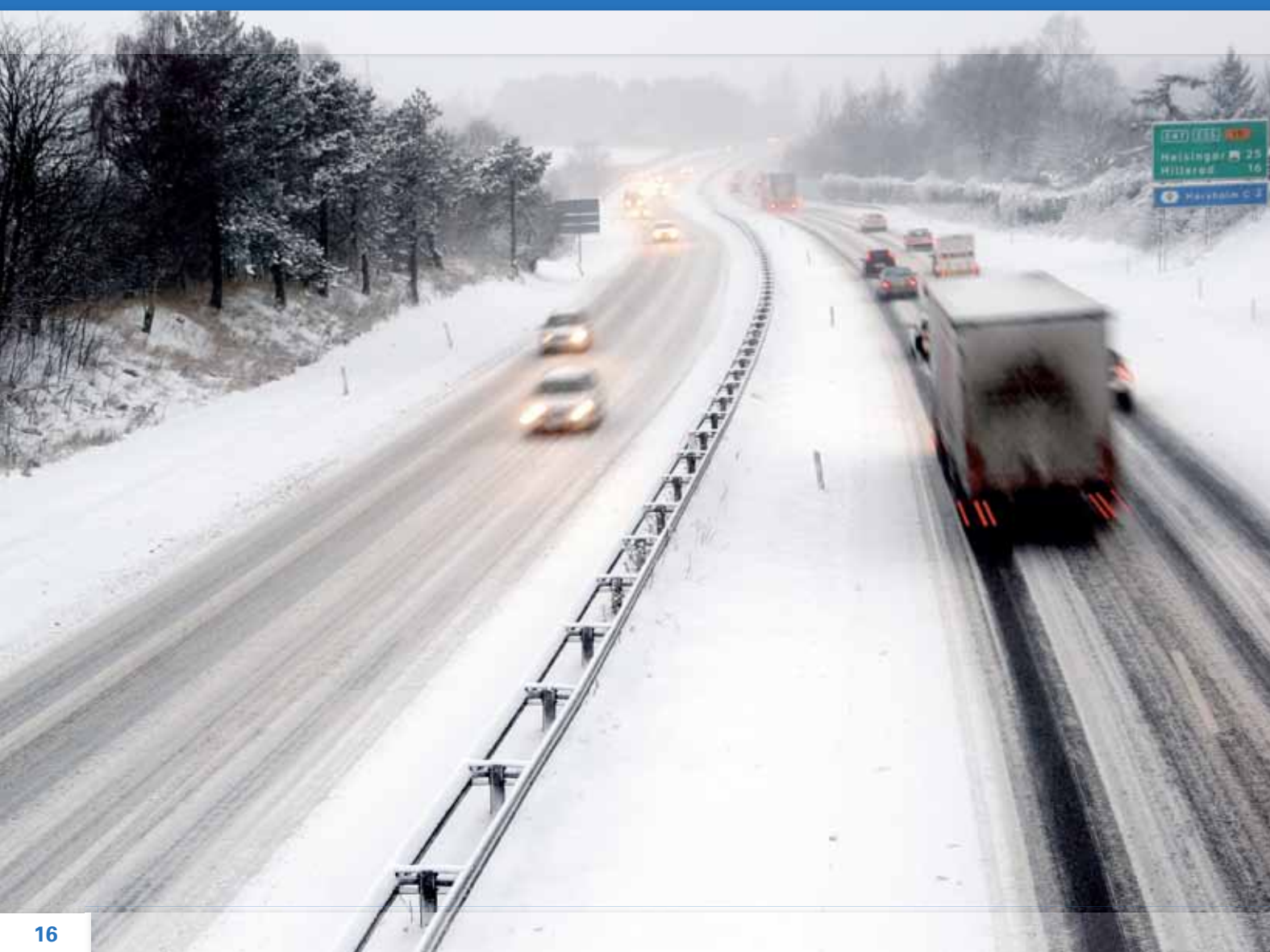




SNOW

SNOW-FRONT
SNOW-DRIVE

As reliable as customer needs to be



Regardless of the weather conditions, our customers are always on the move. As a tire manufacturer with Alpine origins, we know: in the colder season of the year, winter tires have to prove themselves on more than just snow and ice. Dry roads, slippery ice and wet roads when the weather thaws make the highest demands on tires, often on a single route.

The tires of our **SNOW** family are built for safe driving, traction and mileage in all weather conditions.

Our brand name “Semperit”, derived from the Latin “Semper it”, means: always moving – so that you are always in control no matter the weather conditions or operational costs.



SNOW-FRONT



M 440

- Front-axle tire for trucks and all-wheel positions for buses
- Numerous transverse edges ensure safe steering and improved braking on wintry roads
- Strong traction on snow and icy roads thanks to deep sipes



Front axle



M 440

295/80 R 22.5 152/148 M
315/80 R 22.5 154/150 M (156/150 L)



SNOW-DRIVE

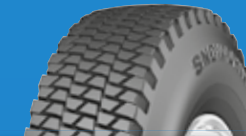


M 431

- Drive-axle tires for trucks in wintry conditions
- High traction and good braking qualities thanks to numerous transverse edges
- High mileage, even on dry roads thanks to an improved tread block profile



Drive axle



M 431

295/80 R 22.5 152/148 M
315/80 R 22.5 154/150 M (156/150 L)
12 R 22.5 152/148 L